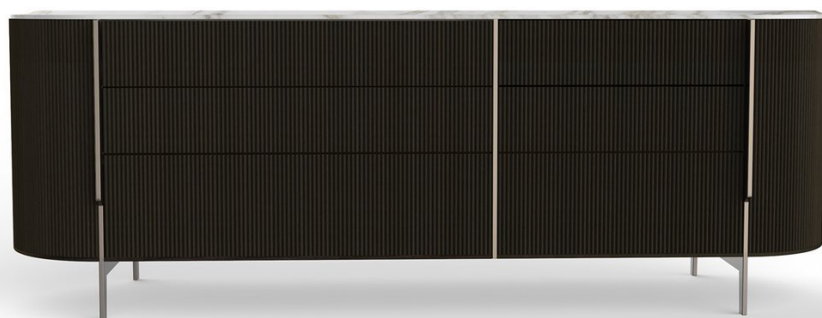

Kumi Comò

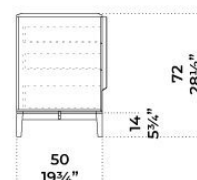
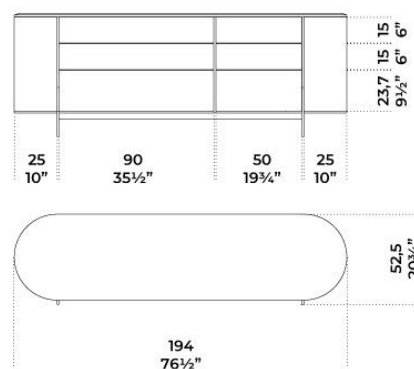
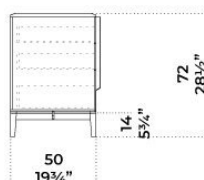
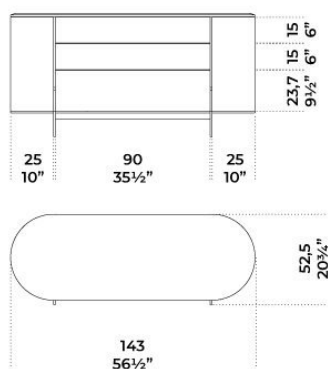
Carlo Colombo
2020



Mobile notte con ante e cassetti.
Struttura in frassino tinto
nero poro aperto oppure tinto
noce poro aperto, rivestita
frontalmente e lateralmente
con fascia zigrinata a mano.
Ante laterali dotate di ripiano
in legno. Per versione tinto
nero piano disponibile in
marmo bisellato Calacatta
Vagli Oro oppure cristallo temperato
6 mm retroverniciato
nero brillante. Maniglie e parti
metalliche in metallo laccato
color fango. Versione tinto
noce disponibile con piano
in marmo bisellato Calacatta
Vagli Oro oppure in cristallo
temperato 6 mm retroverniciato
brillante nei colori liquirizia,
blu grigio oppure verde grigio.

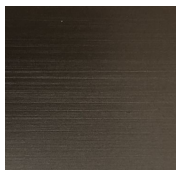
Night unit with doors and
drawers. Structure in black
lacquered open pore ash or
walnut lacquered open pore
ash. Fronts and sides cladde
with hand-knurled border.
Modules with doors supplied
with inside wood shelf. In
the black lacquered open
pore version top available in
bevelled Calacatta Vagli Oro
or Verde Alpi marble or 6 mm
thick tempered black back
painted glass. Handles and
metal parts lacquered in the
"fango" colour. In the walnut
lacquered open pore version
top available in bevelled
Calacatta Vagli Oro marble or
6 mm thick tempered back
painted glass in liquorice, blue
grey or green grey colours.

Dimensioni / Sizes
Cm (L x P x H)
143 x 52,5 x 71
194 x 52,5 x 71





Metallo / Metal



Fango

Fango

Legno / Wood



Nero poro

aperto (Layer)

Black open pore

(Layer)

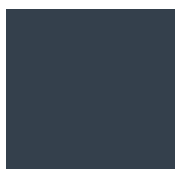
Cristallo / Glass



Liquirizia

brillante

Bright liquorice

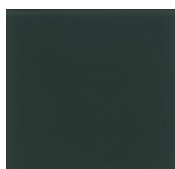


Blu grigio

brillante

Bright blue

grey

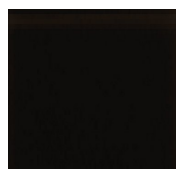


Verde grigio

brillante

Bright green-

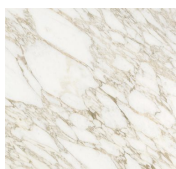
grey



Nero brillante

Bright black

Marmo / Marble



Calacatta Vagli

Oro

Calacatta Vagli

Oro
