

© COPYRIGHT 2019 MDF ITALIA SRL SOCIETA' UNIPERSONALE

2018

# AÏKU SOFT

Designed by Jean Marie Massaud

AÏKU SOFT is the new collection of chairs designed by Jean-Marie Massaud, both for home and contract spaces. Now available in padded shell!

AÏKU comes from the Japanese word “haiku” (俳句), and it means a short poem generally composed of three verses. Wonderful poems that in a few words express remarkable meanings; a simple poem, with no lexical frills and conjunctions, taking its strength from suggestions. Due to its incredible shortness, it requires a considerable synthesis of thought and image.

The meaning and the sound of this word reveal the project’s concept, to reconcile the paradoxes of uses and sensitiveness. AÏKU can be radical, but at the same time is a refined architecture designed for domestic environments, as well as offices and public spaces.

[WATCH THE 360° VIEW OF THE AÏKU SOFT](#)

## PADDED SHELL

Injection moulded polypropylene body, cold moulded padding shaped and applied on the load-bearing piece. The cover is not removable and covers the armchair completely.

## BASES

Bases available:

- . 4-legged round-shaped base in steel tube, painted matt white, matt graphite grey or chrome-plated.
- . Sled base in steel wire, painted matt white, matt graphite grey or chrome-plated.
- . Sled base in steel wire with armrests, painted matt white, matt graphite grey or chrome-plated.
- . Sled base in steel wire with armrests and table, painted matt white, matt graphite grey or chrome-plated. HPL 10mm thick table arm available in matt white or matt black.
- . 4-legged tapered base with injection-moulded tube in rectangular section, painted matt white, matt graphite grey or bright black chrome, nickel chrome, gold and pink gold.
- . 4-legged base in solid oak with a natural, bleached or brown finish.

## ACCESSORIES

- Injection moulded under-seat for better stacking.
- Hook for sled base, 4-legged base and 4-legged tapered base: dedicated hooking system for seat alignment, made of stiff PA6 plastic, in the colours white and black.
- Place marker: dedicated numbering system with magnet hook, in stiff PA6 plastic, in the colours white and black. For 4-legged round-shaped base and sled base.

PADDED SHELL



OPTIONS

**4-legged round-shaped base**  
L57.6 D55 H78 cm  
seat H46.7 cm

**sled base**  
L59.2 D55 H78 cm  
seat H46.7 cm

**sled base with armrests**  
L59.2 D55 H78 cm  
seat H46.7 cm

**sled base with table**  
L62 D55 H78 cm  
open table L62 P62 H78  
seat H46.7 cm

**4-legged tapered base**  
L58 D55 H78 cm  
seat H46.7 cm

**4-legged oak base**  
L50 D55 H78 cm  
seat H46.7 cm

STACKABILITY



**max 4 pcs for:**  
4-legged round-shaped base, sled base, sled base with armrests, 4-legged tapered base (excluding the wooden base)

**max 2 pcs for:**  
sled base with table



specific "stacking under-seat" accessory

# Finishing

The number in the dot corresponds to the number of colour/material finish.

Here below, in the section FINISH OPTIONS, please note all the colours of the materials used for this product.

## CHAIR

---

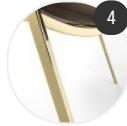
### Base



Metal base



4-legged oak base



Chrome base

---

### Cover



Todi



York



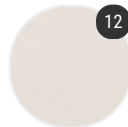
Fall



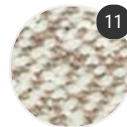
Monaco



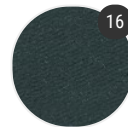
Perth



Londra



Parigi



Alchemy



Aloha



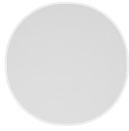
Leather

# Finish options

## BASE

---

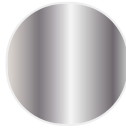
### Metal base



Matt painted  
white X053



Matt painted  
graphite grey  
X054



Chrome-  
plated

### 4-legged oak base



Natural oak  
X030



Bleached oak  
X075



Brown oak  
X076

### Chrome base



gold chrome



black chrome



nichel chrome



pink gold  
chrome

## COVER

---

## Todi



white R851  
Col. 13



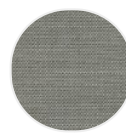
white/beige  
R850 Col. 11



grey/sand  
R846 Col. 07



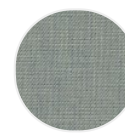
light grey  
R849 Col. 10



light  
grey/anthracite  
grey R848 Col.  
09



anthracite  
grey/light  
blue R847  
Col. 08



light  
blue/grey  
R855 Col. 19



powder  
pink/grey  
R856 Col. 21



water-  
green/military  
green R853  
Col. 17



orange/grey  
R852 Col. 15



water-  
green/grey  
R854 Col. 18

## York



Artificial  
leather black  
R346 Col. 924



Artificial  
leather white  
R333 Col. 900



Artificial  
leather ivory  
R339 Col. 910



Artificial  
leather beige  
R334 Col. 901



Artificial  
leather light  
grey R335  
Col. 903



Artificial  
leather  
medium grey  
R338 Col. 909



Artificial  
leather dark  
grey R341  
Col. 914



Artificial  
leather  
graphite grey  
R343 Col. 919



Artificial  
leather blue  
R337 Col. 908



Artificial  
leather  
burgundy  
R345 Col. 923



Artificial  
leather brown  
R344 Col. 922



Artificial  
leather olive  
green R336  
Col. 907



Artificial  
leather light  
green R349  
Col. 931



Artificial  
leather  
bluette R348  
Col. 929



Artificial  
leather  
mustard  
yellow R351  
Col. 935



Artificial  
leather  
orange R350  
Col. 933



Artificial  
leather red  
R340 Col. 913



Artificial  
leather rust  
R342 Col. 917

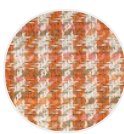


Artificial  
leather testa  
di moro R347  
Col. 927

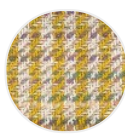
## Fall



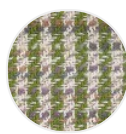
white-mud  
R477 Col.  
502.000



white-orange  
R478 Col.  
502.160



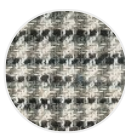
white-yellow  
R479 Col.  
502.180



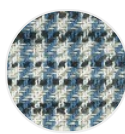
white-green  
R480 Col.  
502.200



white-grey  
R481 Col.  
502.220



white-black  
R482 Col.  
502.221



white-light  
blue R483  
Col. 502.240

## Monaco



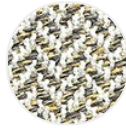
white-beige  
R313 Col.  
443.000



white-light  
grey R314  
Col. 443.001



beige-black  
R319 Col.  
443.040



white-yellow  
R318 Col.  
443.014



white-red  
R315 Col.  
443.007



white-light  
green R317  
Col. 443.011



white-blue  
R316 Col.  
443.010



beige-  
anthracite  
grey R320  
Col. 443.060

## Perth



yellow R393  
24



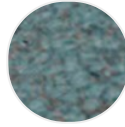
beige R385 01



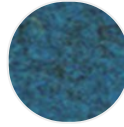
light grey  
R395 30



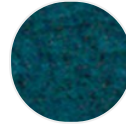
turtledove  
R386 04



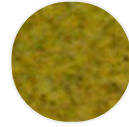
ice light blue  
R387 07



light blue  
R388 08



green R389  
09



light green  
R394 25



rust R392 20



orange R391  
19



burgundy  
R390 13



black R396 31



powder pink  
R463 Col. 06



dark blue  
R464 Col. 11

## Londra



white R058  
Col. 01



brown R060  
Col. 06



grey R063  
Col. 09



graphite grey  
R062 Col. 08



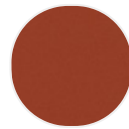
black R061  
Col. 07



red R311 Col.  
021



burgundy  
R310 Col. 020



rust R312  
Col. 023



turtledove  
R304 Col. 05



green R306  
Col. 012



light blue  
R307 Col. 015



blue R308  
Col. 016

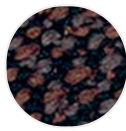
## Parigi



White-beige  
R429 Col. 001



beige-dark  
grey R430  
Col. 002



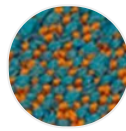
dark grey-  
brown R431  
Col. 003



light grey-  
dark grey  
R432 Col. 004



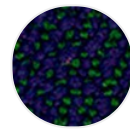
dark grey-  
black R433  
Col. 005



light blue-  
rust R434  
Col. 006



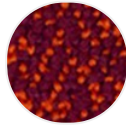
rust-beige  
R435 Col. 007



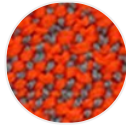
blue-green  
R436 Col. 008



green-rust  
R437 Col. 009



burgundy-  
orange R438  
Col. 010



orange-light  
blue R439  
Col. 011

## Alchemy



light grey  
R844 Col. 43



brown R829  
Col. 04



orange R831  
Col. 14



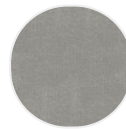
dark orange  
R830 Col. 13



dark red  
R838 Col. 28



gray-green  
R845 Col. 44



medium grey  
R833 Col. 23



blue R843  
Col. 41



cobalt blue  
R842 Col. 38



water-green  
R840 Col. 35



olive green  
R832 Col. 18



sage R839  
Col. 31



emerald  
green R841  
Col. 37



plum R836  
Col. 26



powder pink  
R834 Col. 24



violet R835  
Col. 25

## Aloha



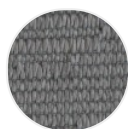
white R873  
Col. 02



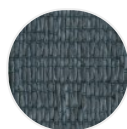
sand R874  
Col. 04



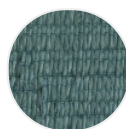
dark orange  
R875 Col. 05



grey R876  
Col. 07



dark grey  
R877 Col. 08



light blue  
R878 Col. 09



Leather

							
leather white R804	leather sand R814	leather beige R803	leather ivory R802	leather yellow R808	leather apricot R801	leather rust R813	leather red R812
							
leather burgundy R807	leather tobacco R815	leather testa di moro R816	leather black R810	leather grey R809	leather bluette R806	leather blue R805	leather green R817